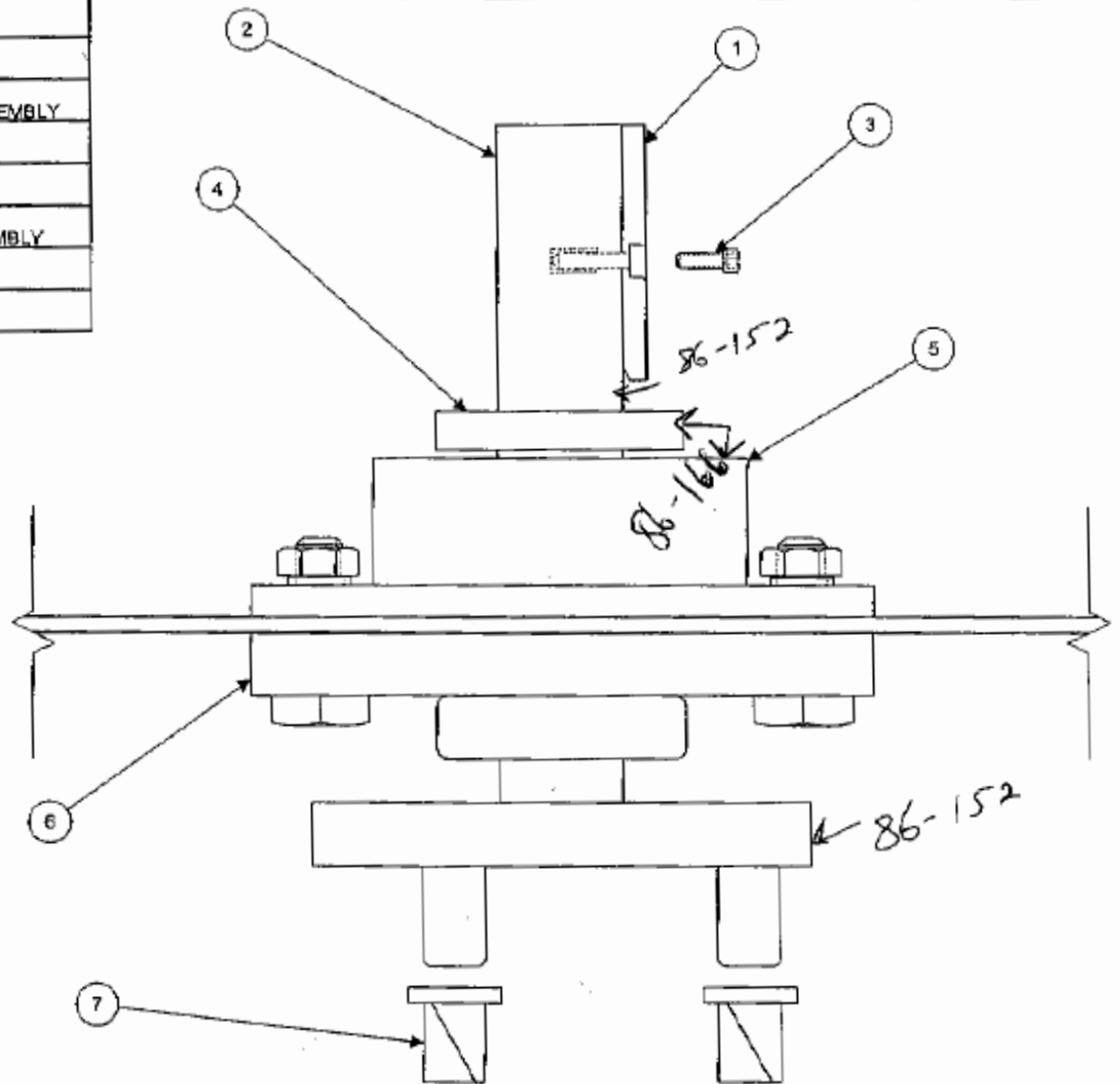


ITEM	QTY.	PART NO.	DESCRIPTION
1	1	85-259	KEY-WOODRUFF-SHAFT
2	1	86-152	UPPER HUB & SHAFT ASSEMBLY
3	1	SSHC #8-32X1/2	SCREW-SOCKET CAP
4	1	85-236	SHAFT SPACER
5	1	86-166	BEARING HOUSING ASSEMBLY
6	1	85-270	FLANGE BEARING-UPPER
7	2	85-118	BUSHING - PIN BLOCK



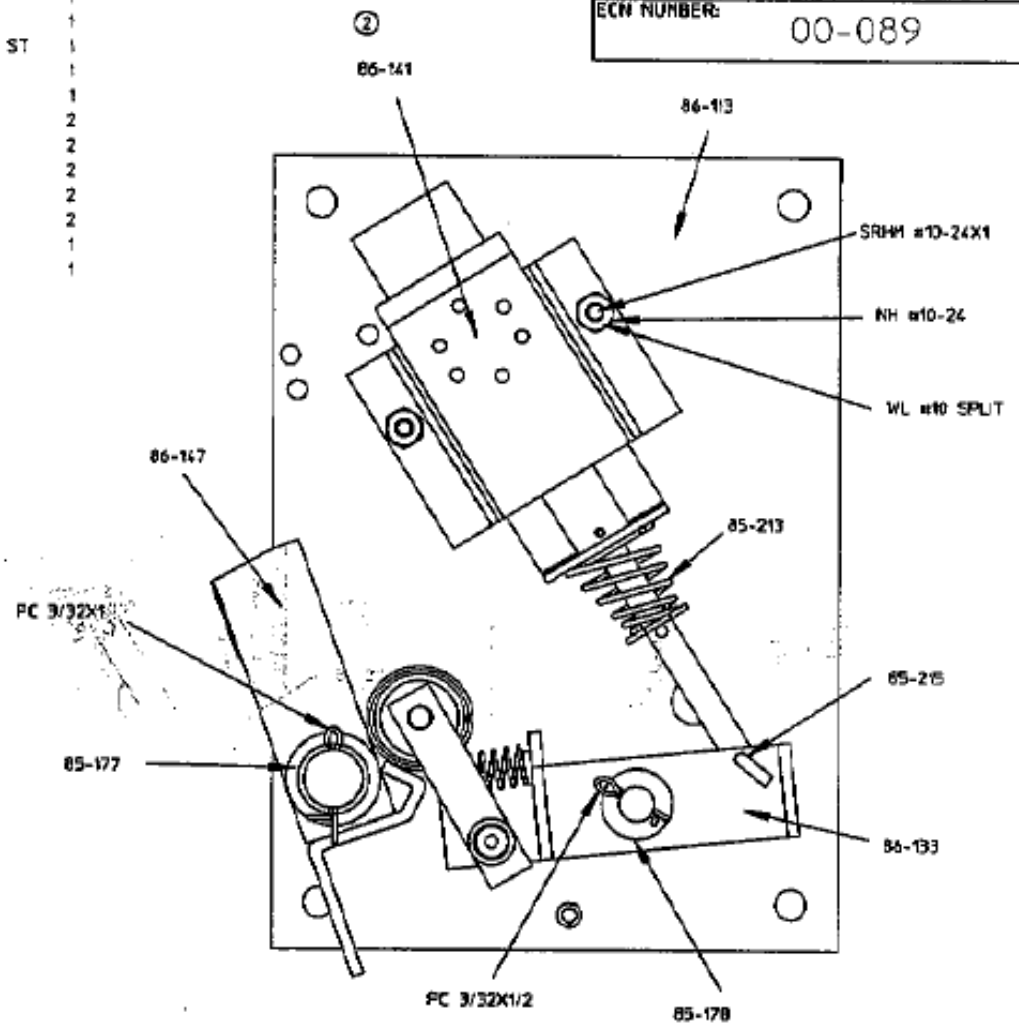
CONTROLLED

REV.	DESCRIPTION	DATE	BY	Phillips CSS Inc 7041 Orchard Dearborn, MI 48126		
				86-152/86-166		
				DRAWING TITLE: UPPER HUB & SHAFT ASSEMBLY W/BEARINGS		
				DATE: 3/31/99	MODEL: ST	ECN #
THESE DRAWINGS AND SPECIFICATIONS ARE THE PROPERTY OF AND PROPRIETARY TO PHILIPS CSS INC. AND ARE NOT TO BE DISCLOSED, REPRODUCED, COPIED OR USED AS THE BASIS OF MANUFACTURE OR SALE OF APPARATUS AND/OR SERVICES, OR OTHERWISE WITHOUT PHILIPS PRIOR WRITTEN CONSENT.				DRAWING NUMBER: CS-1006	PAGE: 1 OF 1	REV: 0

P/N	DESCRIPTION	QTY.
② 85-213	SPRING - COMPRESSION- RETURN - SOLENOID	1
85-215	WIRE - LINKAGE - PIVOT ARM - ST	1
86-113	LOCK PLATE ASSEMBLY - HIGH - LE - ST	1
85-133	PIVOT & ROLLER ARM ASSEMBLY - HIGH - LE - ST	1
86-141	SOLENOID ASSEMBLY	1
③ 86-147	LOCKING BAR ASSEMBLY - ST	1
SRHM#10-24X1	SCREW - MACHINE - PAN - #10 UNC x 1	2
NH#10-24	NUT - MACHINE SCREW - #10 UNC	2
WL#10 SPLIT	WASHER - HELICAL SPRING - REGULAR - #10	2
85-175	WASHER - THRUST - 3/8 x 3/4 x 1/16	2
85-177	WASHER - THRUST - 5/8 x 1 x 1/16	2
PC3/32X1/2	PIN - COTTER - 3/32 x 1/2	1
PC3/32X1	PIN - COTTER - 3/32 x 1	1

DRAWING NUMBER:	86-128	REV:	4
ECN NUMBER:	00-089		

CONTROLLED



MATERIAL: *****
FINISH: ****

REVISIONS

REV.	DESCRIPTION	BY	DATE
1	UPDATE HARDWARE PART NUMBER DESIGNATIONS	GVB	02/19/99
2	RE-DRAWN AND ELIMATED ISOMETRIC VIEWS. 86-141 WAS 86-137.	CLS	07/14/99
3	Revised 86-147 Assembly	GVB	03/13/00
4	ADDED 85-213 IDENTIFICATION	CLS	05/22/00

ALL DIMENSIONS ARE IN INCHES UNLESS SPECIFIED

TOLERANCE UNLESS SPECIFIED	
0.0	± 0.060
0.00	± 0.030
0.000	± 0.015
0.0000	± 0.005
ANGULAR	± 0.5°

www.TurnstileParts.com

DRAWING TITLE:
LOCKING MECHANISM ASSEMBLY - HIGH -
FAIL-LOCK

THESE DRAWINGS & SPECIFICATIONS ARE THE PROPERTY OF AND PROPRIETARY TO PHILIPS INDUSTRIES, INC. AND ARE NOT TO BE DISCLOSED, REPRODUCED, COPIED OR USED AS THE BASIS OF MANUFACTURE OR SALE OF APPARATUS AND/OR DEVICES, OR OTHERWISE WITHOUT PHILIPS' PRIOR WRITTEN CONSENT.

DRAWN BY/DATE: CLS 07/14/99

CHECKED BY/DATE: GVB 07/14/99

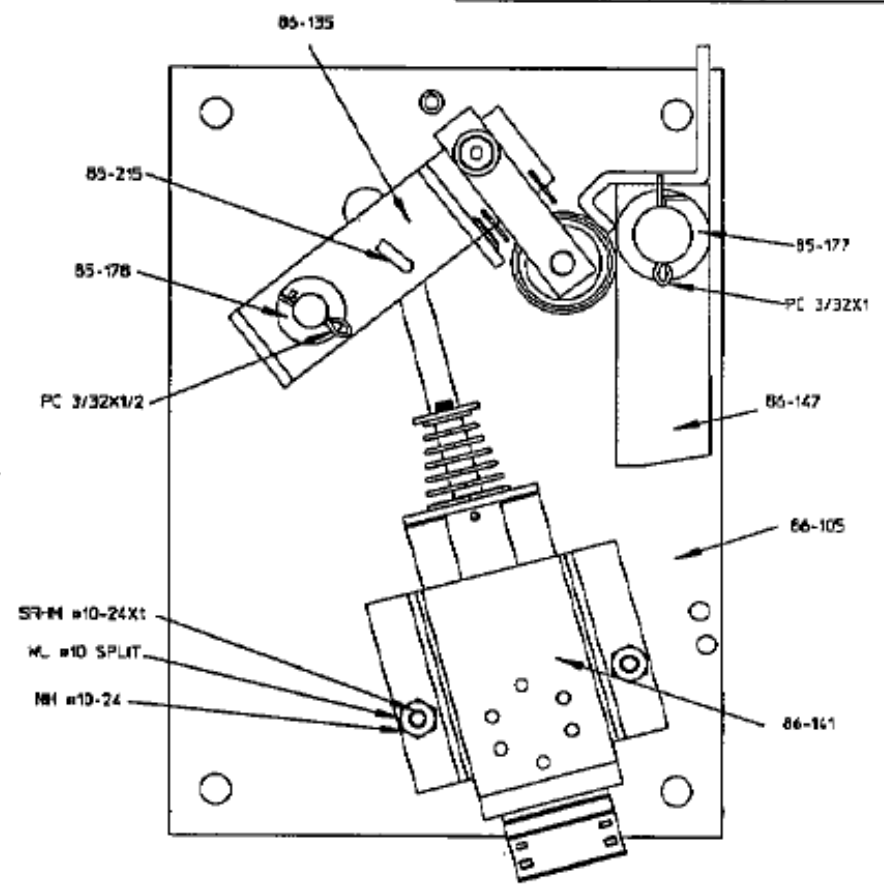
SIZE:	MODEL:	DRAWING NUMBER:	REV:
A	ST	86-128	4
SCALE: # : # ASSEMBLY		SHEET: 1 OF 1	

DRAWING NUMBER: 86-130 REV. 2
 ECN NUMBER: 00-025

P/N	DESCRIPTION	QTY.
85-215	WIRE - LINKAGE - PIVOT ARM - ST	1
86-117	LOCK PLATE ASSEMBLY - HIGH - UE - ST	1
86-135	PIVOT & ROLLER ARM ASSEMBLY - HIGH - UE - ST	1
86-141	SOLENOID ASSEMBLY - UE - ST	1
86-147	LOCKING BAR ASSEMBLY - ST	1
② SRM#10-24X1	SCREW - MACHINE - PAN - #10 UNC x 1	2
NH#10-24	NUT - MACHINE SCREW - #10 UNC	2
WL#10 SPLIT	WASHER - HELICAL SPRING - REGULAR - #10	2
85-176	WASHER - THRUST - 3/8 x 3/4 x 1/16	2
85-177	WASHER - THRUST - 5/8 x 1 x 1/16	2
PC3/32X1/2	PIN - COTTER - 3/32 x 1/2	1
PC3/32X1	PIN - COTTER - 3/32 x 1	1

NOTE:
 1: 85-135 & 86-147 MUST PIVOT FREELY.

CONTROLLED



MATERIAL: See Chart
 FINISH: None

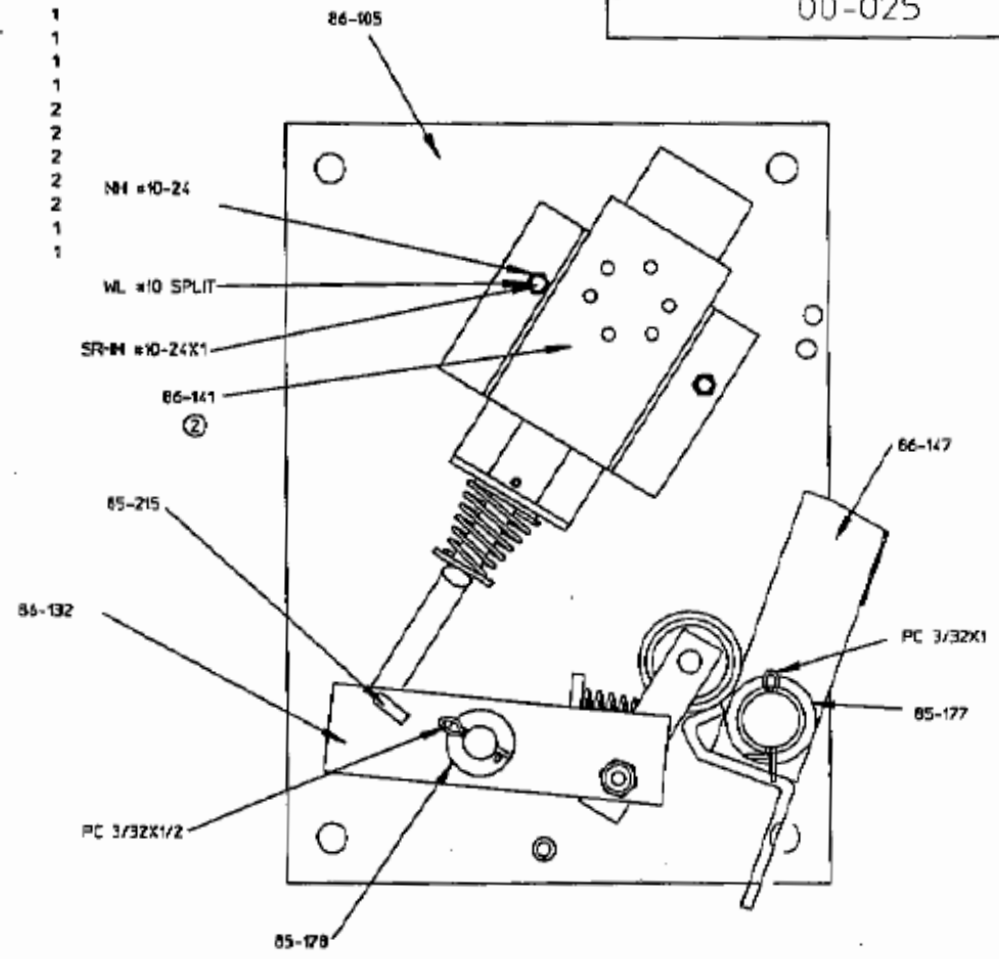
REVISIONS				ALL DIMENSIONS ARE IN INCHES UNLESS SPECIFIED		www.TurnstileParts.com	
REV	DESCRIPTION	BY	DATE	TOLERANCE UNLESS SPECIFIED		DRAWING TITLE:	
1	Update Hardware Part Number Designations	GVB	02/19/99	0.0	± 0.060	LOCKING MECHANISM ASSEMBLY HIGH - UE - ST	
2	Eliminate Isometric Views. Revised 86-147 Assembly	GVB	03/15/00	0.00	± 0.030		
				0.000	± 0.015		
				0.0000	± 0.005		
				ANGULAR	± 0.5°		
				DRAWN BY/DATE: DMK 08/08/94		SIZE: A	MODEL: ST
				CHECKED BY/DATE: JAK 08/08/94		DRAWING NUMBER: 86-130	
						SCALE: 1 : 2	ASSEMBLY
						REV: 2	
						SHEET: 1 OF 1	

THESE DRAWINGS & SPECIFICATIONS ARE THE PROPERTY OF AND PROPRIETARY TO PHILIPS INDUSTRIES, INC. AND ARE NOT TO BE DISCLOSED, REPRODUCED, COPIED OR USED AS THE BASIS OF MANUFACTURE OR SALE OF APPARATUS AND/OR DEVICES, OR OTHERWISE WITHOUT PHILIPS' PRIOR WRITTEN CONSENT.

DRAWING NUMBER:	86-127	REV:	3
ECN NUMBER:	00-025		

P/N	DESCRIPTION	QTY.
85-215	WIRE - LINKAGE - PIVOT ARM - ST	1
86-105	LOCK PLATE ASSEMBLY - LOW - LE - ST	1
85-132	PIVOT & ROLLER ARM ASSEMBLY - LOW - LE - ST	1
86-141	SOLENOID ASSEMBLY	1
③ 86-147	LOCKING BAR ASSEMBLY - ST	1
① SRHM#10-24X1	SCREW - MACHINE - PAN - #10 UNC x 1	2
N#10-24	NUT - MACHINE SCREW - #10 UNC	2
WL#10 SPLIT	WASHER - HELICAL SPRING - REGULAR - #10	2
85-178	WASHER - THRUST - 3/8 x 3/4 x 1/16	2
85-177	WASHER - THRUST - 5/8 x 1 x 1/16	2
PC3/32X1/2	PIN - COTTER - 3/32 x 1/2	1
PC3/32/1	PIN - COTTER - 3/32 x 1	1

CONTROLLED



MATERIAL: *****
FINISH: ****

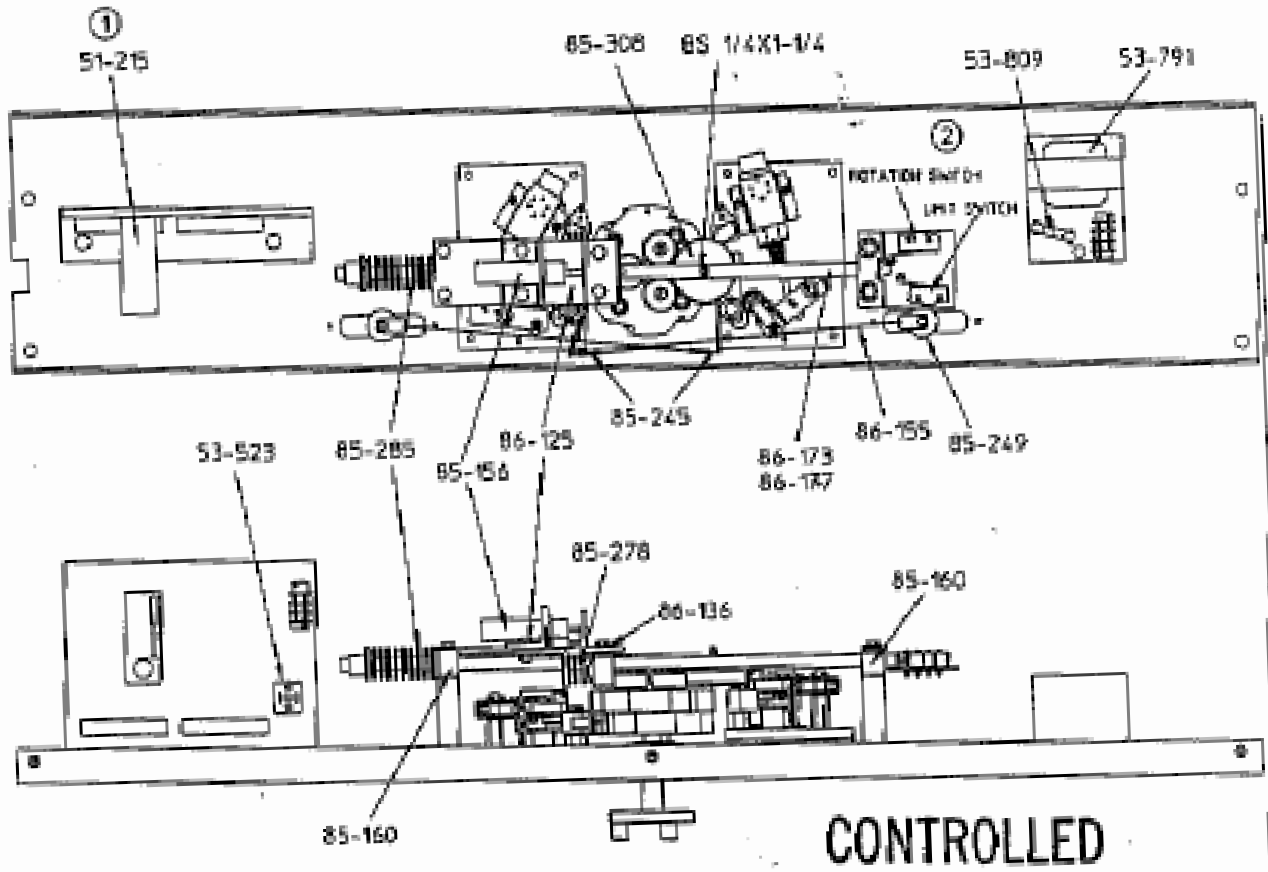
REVISIONS			
REV.	DESCRIPTION	BY	DATE
1	UPDATE HARDWARE PART NUMBER DESIGNATIONS	GVB	02/15/99
2	RE-DRAWN AND ELIMINATED ISOMETRIC VIEWS. 86-141 WAS 86-137.	GLS	07/14/99
3	Revised 86-147 Assembly	GVB	03/14/00

ALL DIMENSIONS ARE IN INCHES UNLESS SPECIFIED	
TOLERANCE UNLESS SPECIFIED	
0.0	± 0.060
0.00	± 0.030
0.000	± 0.015
0.0000	± 0.005
ANGULAR	± 0.5°
DRAWN BY/DATE:	GLS 07/14/99
CHECKED BY/DATE:	GVB 07/14/99

www.TurnstileParts.com			
DRAWING TITLE: LOCKING MECHANISM ASSEMBLY - LOW - FAIL-LOCK			
SIZE: MODEL:	DRAWING NUMBER:	REV:	
A ST	86-127	3	
SCALE: □ : □	ASSEMBLY	SHEET: 1 OF 1	

THESE DRAWINGS & SPECIFICATIONS ARE THE PROPERTY OF AND PROPRIETARY TO PHILIPS INDUSTRIES, INC. AND ARE NOT TO BE DISCLOSED, REPRODUCED, COPIED OR USED AS THE BASIS OF MANUFACTURE OR SALE OF APPARATUS AND/OR DEVICES, OR OTHERWISE WITHOUT PHILIPS' PRIOR WRITTEN CONSENT.

- ①
- 51-215 PLC Controller
 - 53-523 Rectifier Bridge
 - 53-791 Transformer - 120 VA
 - 53-809 Fuse-16a @250VAC Slo-Blo
 - 85-156 Shock Absorber
 - 85-160 Block-Bearing-Plunger Bar
 - 85-245 Spring-Extension-Key Bypass
 - 85-249 Beel Lock Cylinder-Key Bypass
 - 85-278 Spring-Compression-Speed Control
 - 85-285 Spring-Compression-Self Centering
 - 85-300 Plunger Bar Roller
 - BS 1/4 Shoulder Bolt BS 1/4X1-1/4
 - 86-125 Speed Control Assembly
 - 86-136 Tension Block Assembly
 - 86-156 Cable Linkage Assy. - Key By-pass
 - 86-173 Plunger Bar/Limit Switch Assembly
 - 86-177 Plunger Bar w/Roller



REVISIONS		
REV	DESCRIPTION	BY DATE
1	ISSUED TO CONTROL PLATE	
2	FOR SERVICE PLATE ASSEMBLY	
3	FOR SERVICE PLATE ASSEMBLY	

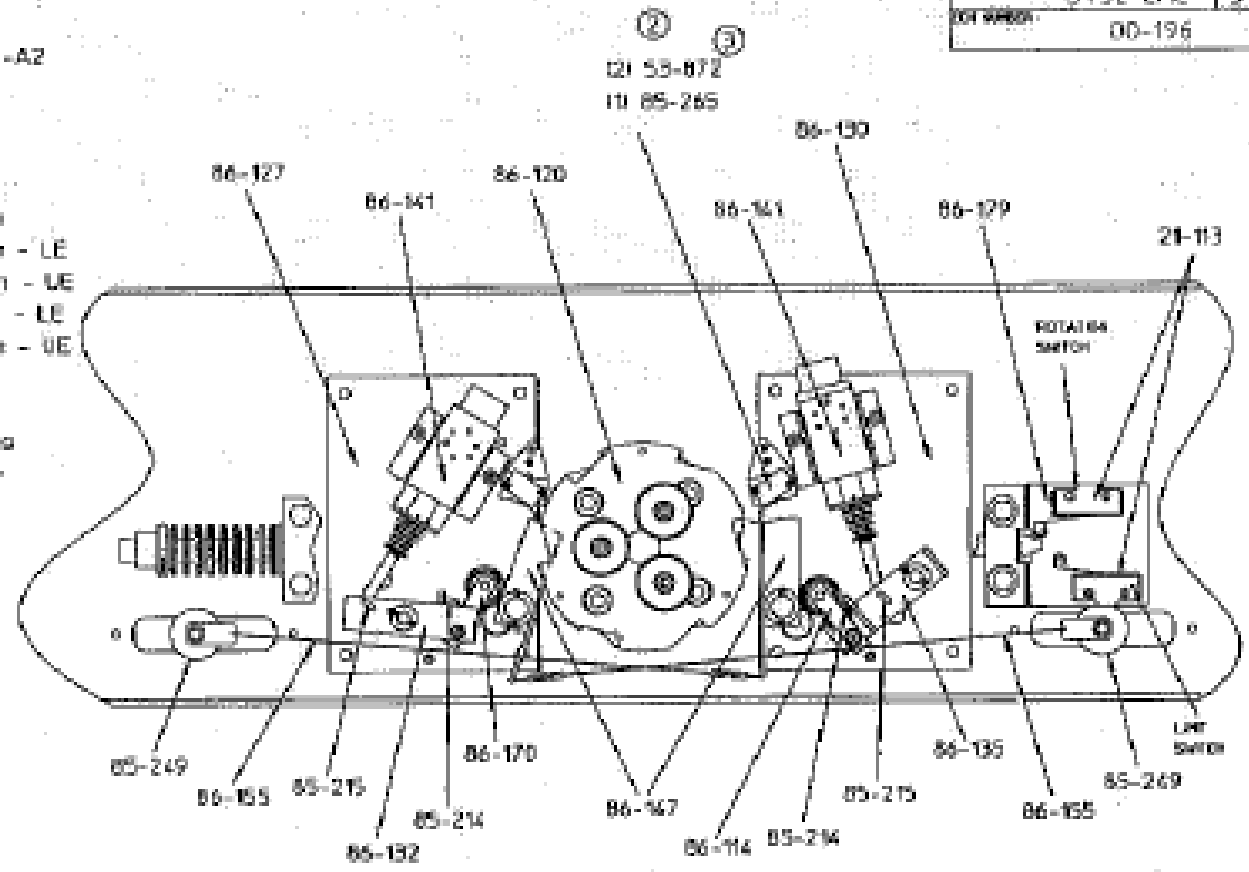
TOLERANCE UNLESS SPECIFIED	
0.5	0.005
0.10	0.002
0.100	0.010
0.0000	0.0005
ANGULAR	0.5°

www.TurnstileParts.com

SCALE	1:1	DATE	00-196
CHECKED BY	ST	DRAWING NUMBER	ST32-CHC
SCALE	1:1	DATE	00-196
CHECKED BY	ST	DRAWING NUMBER	ST32-CHC

- 21-113 Rotation & Limit Switches - B2-2RL3-A2
- 85-214 Spring - Compression - Pivotal Arm
- 85-215 Wire - Linkage - Pivotal Arm
- 85-249 Best Lock Cylinder - Key Bypass
- 86-114 Roller Bearing Arm Assembly - High
- 86-120 Retainer & Roller Assembly - 3 Arms
- 86-127 Locking Mechanism Assembly - Low - LE
- 86-130 Locking Mechanism Assembly - High - UE
- 86-132 Pivotal & Roller Arm Assembly - Low - LE
- 86-135 Pivotal & Roller Arm Assembly - High - UE
- 86-141 Solenoid Assembly
- 86-147 Locking Bar Assembly
- 86-155 Cable Linkage Assy. - Key Bypass
- 86-170 Roller Bearing Arm Assembly - Low
- 86-179 Switch Plate Assembly

- 53-572 Switch-Q2 Req'd per lock plate
Locked Indication & Ind. Light
- 85-265 Switch Bracket



CONTROLLED

REVISIONS				ALL DIMENSIONS ARE IN INCHES UNLESS OTHERWISE SPECIFIED	
REV	DESCRIPTION	BY	DATE	TOLERANCE UNLESS SPECIFIED	DRAWING TITLE
1	SEE TITLE	ST	05/196	0.005	www.TurntableParts.com
1	SEE TITLE	ST	05/196	0.01	
2	SEE TITLE	ST	05/196	0.005	
				0.005	
				0.005	
				ANGULAR	0.5°

DESIGN BY: ST	DATE: 05/196	REV: 3	WORK NUMBER: ST32-CHC	REV: 3
CHECKED BY: ST	DATE: 05/196	SCALE: 1:1	HTA	SHEET: 2 OF 2

ITEM	QTY.	PART NO.	DESCRIPTION
1	2	85-116	BUSHING-PIN BLOCK
2	1	86-107	LOWER HUB & SHAFT ASSEMBLY
3	1	85-238	SHAFT SPACER
4	1	85-143	FLANGE BEARING-LOWER
5	1	85-205	MOUNTING PLATE-LOWER BEARING

NOTE: BUSHINGS ARE USED ON ASTG, ASTG2, CATG AND CSTG MODELS. NOT USED ON STG AND STG2 MODELS.

NOTE: SPECIFY COLOR ANODIZING.

NOTE: SPACER IS USED ON STG, ASTG AND CSTG MODELS. NOT USED ON STG2, CATG AND ASTG2 MODELS.

NOTE: THIS ENTIRE ASSEMBLY CAN BE ORDERED AS PART # 86-146. SPECIFY COLOR OF ANODIZING OF 85-205 MOUNTING PLATE. (DOES NOT INCLUDE 85-116 BUSHINGS).

CONTROLLED

REV.	DESCRIPTION	DATE	BY	www.TurnstileParts.com			
				DRAWING TITLE: LOWER SHAFT & BEARING ASSEMBLY			
				DATE: 3/31/99	MODEL: ST	ECN#:	
				DRAWING NUMBER: CS-1007	PAGE: 1 OF 1	REV: 1	
<small>THESE DRAWINGS AND SPECIFICATIONS ARE THE PROPERTY OF AND PROPRIETARY TO PHILIPS CSS INC. AND ARE NOT TO BE DISCLOSED, REPRODUCED, COPIED OR USED AS THE BASIS OF MANUFACTURE OR SALE OF APPARATUS AND/OR DEVICES, OR OTHERWISE WITHOUT PHILIPS' PRIOR WRITTEN CONSENT.</small>							